

APEM

www.apem.com

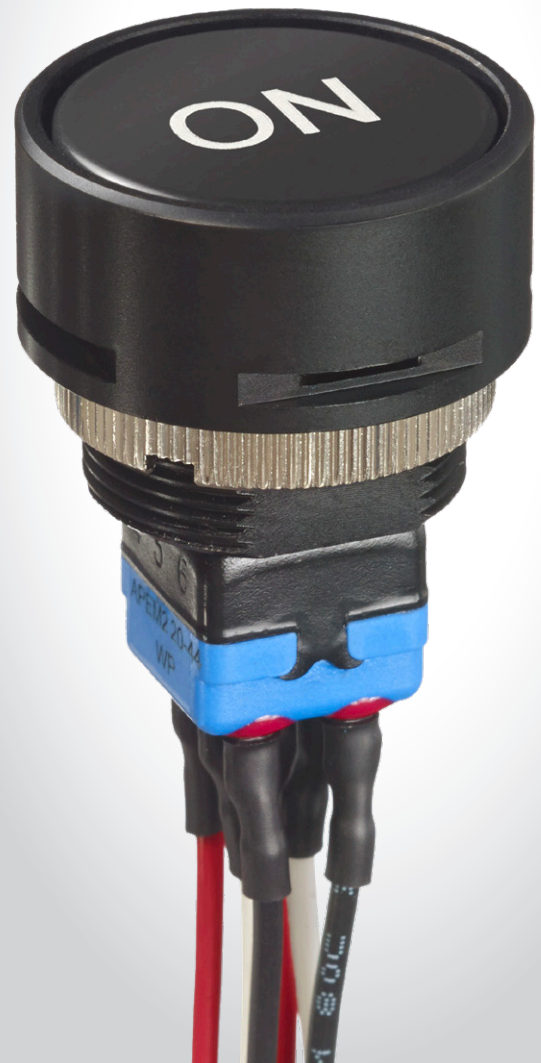
THIS RUGGED PUSHBUTTON INCREASES VISIBILITY OF YOUR CRITICAL FUNCTIONS
WITH ITS EXTRA-LARGE ACTIVATION SURFACE

WP SERIES MOMENTARY PUSHBUTTON

Operating armored military vehicles during high-stress missions requires interfaces that remain reliable under pressure. In such environments, where gloves are standard, every command must be executed without error. A durable, tamper-proof actuator becomes essential to ensure mission success.

MAIN APPLICATIONS

- Armored fighting vehicles
- Remote weapon systems



WP SERIES - MOMENTARY PUSHBUTTON

A high-performance professional switch for front panel mounting, designed for use in harsh environments. Sealed up to IP69K that can be customized with text or symbol. Has the option of a security guard to eliminate accidental operation.

Multiple actuator colors as standard



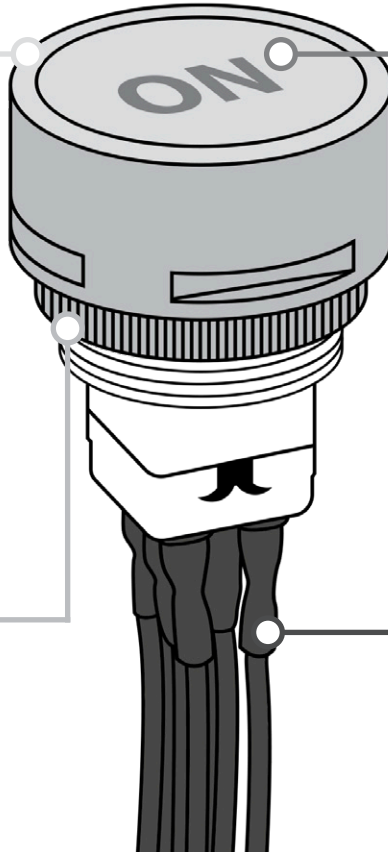
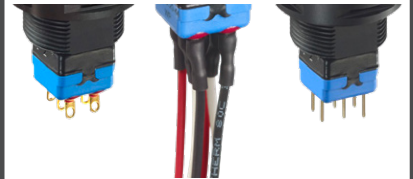
Optional text and symbol engraving



Security guard available



Available with PCB pins, solder lug terminals or flying leads



TECHNICAL SPECIFICATIONS

- Large diameter pusher (25 mm)
- IP67 and IP69K
- Operating temperature: -40 °C to +85 °C
- Double pole
- Momentary electrical function
- PCB, wire, solder lug outputs
- Compact under panel

BENEFITS

- Fully sealed for protection against dust and water.
- Customizable actuator allows laser engraving for tailored markings.
- Front panel mounting ensures secure, tamper-resistant installation.
- Security guard option prevents accidental activation and protects the actuator.
- Available with wire harness and connector for easy plug-and-play integration.

RELATED PRODUCTS



12000X778 series



TS series



13000X778 series



13000x778 series



FG series



ES series



3500 series



MSG series



IZ series

Please reach your regular APEM sales contact or visit apem.com

 **APEM**
an IDEC company

www.apem.com